

ZUM 233B

TOTAL 1,714 SF

OPTIONS SHOWN:

- garage
- deck

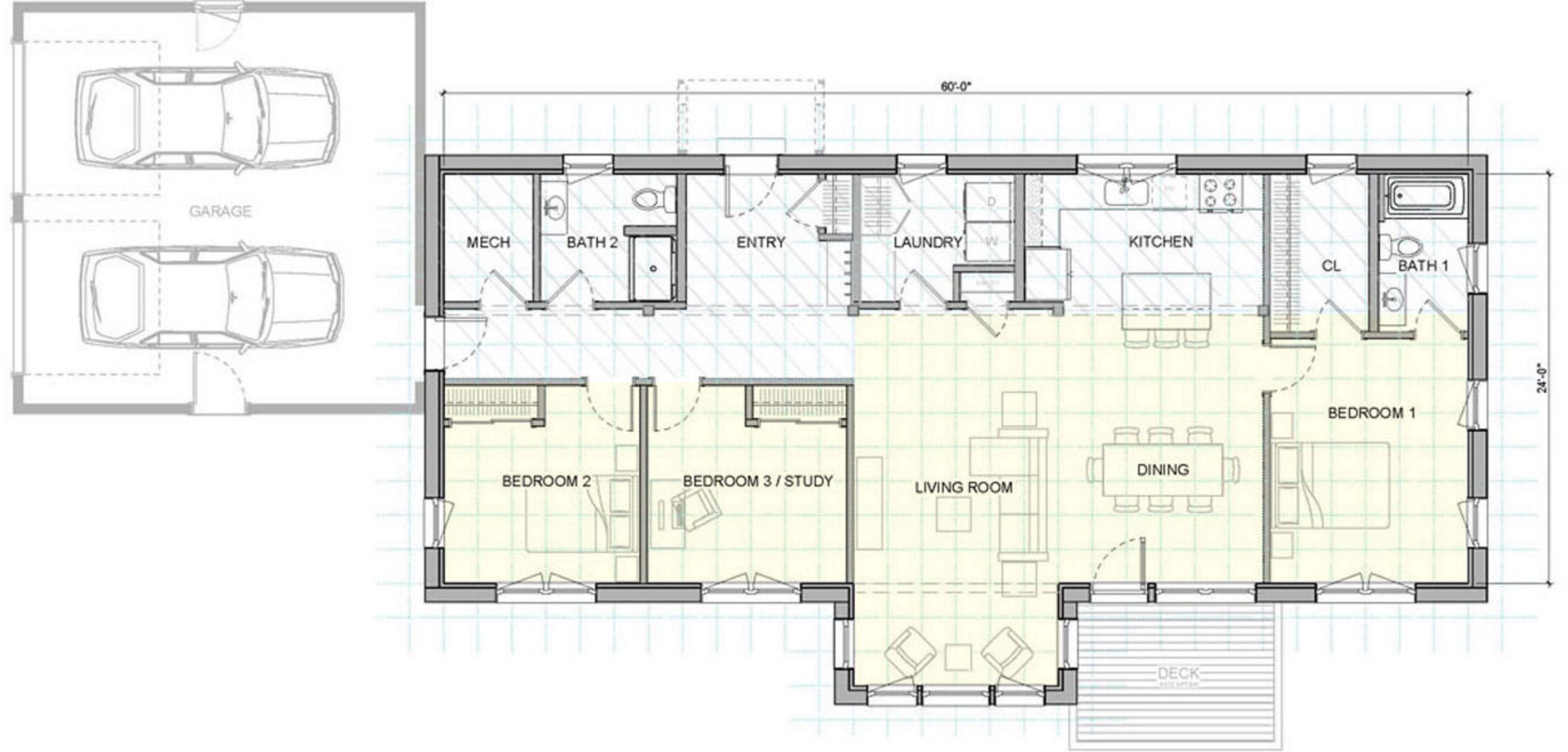
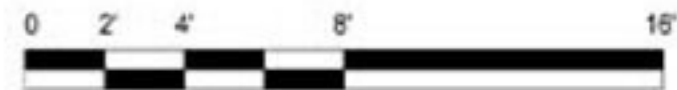
BASE PRICE * \$440,000

PRICE AS SHOWN with options * \$495,000

**These estimates, based on a Keene, NH location, exclude site work, and assume a slab-on-grade foundation and standard Unity fixtures and finishes.*

- AREA OF 8 FT HIGH CEILING
- AREA OF SLOPED CEILING

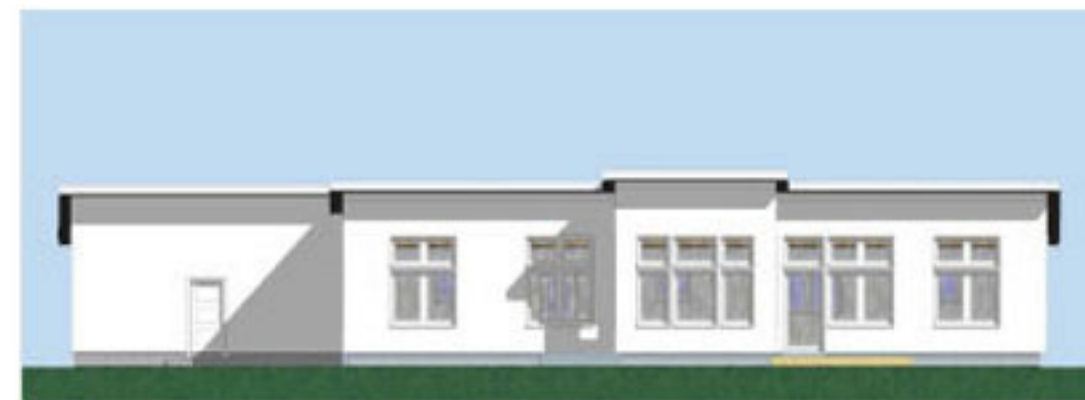
2'-0" GRID



Front Elevation



Side Elevation



Back Elevation



Side Elevation